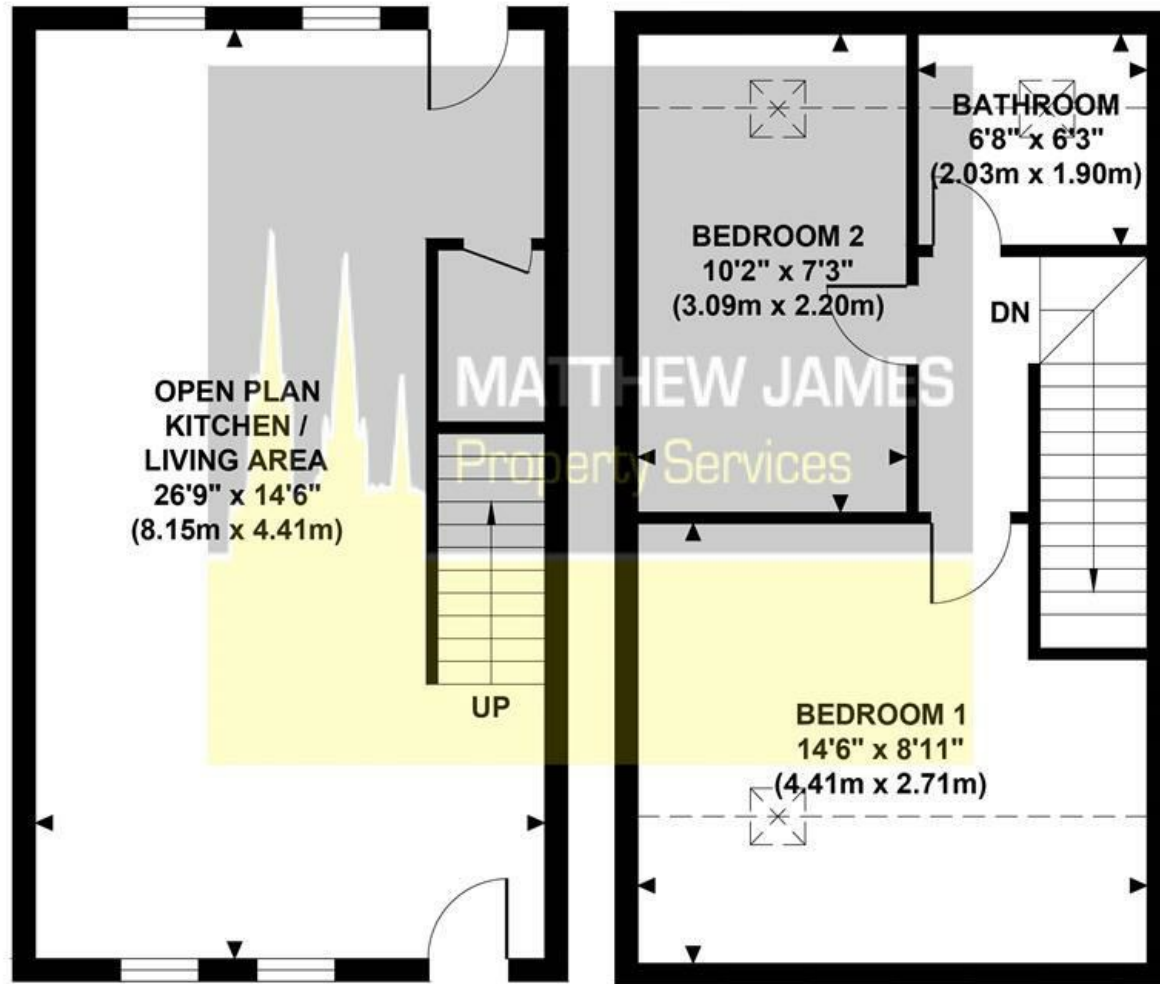


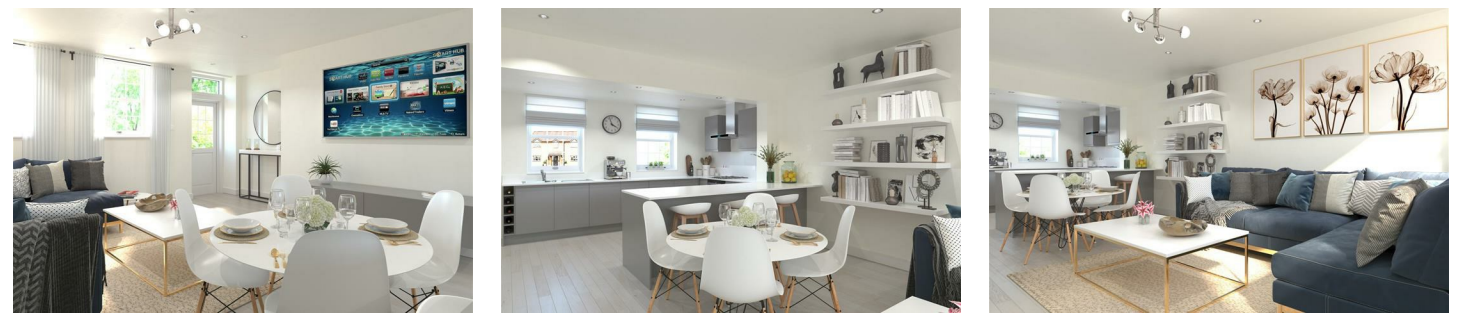
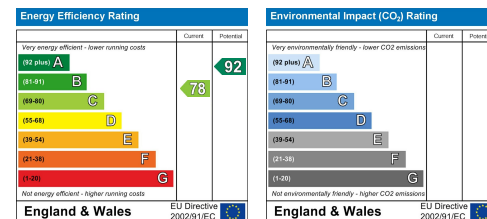
Plot 4, The School House

Approximate Gross Internal Area:
784 sq ft / 72.8 sq m



Although every attempt has been made to ensure accuracy, all measurements are approximate. The floor plan's for illustrative purposes only and not to scale. Measured in accordance to RICS standards.

These particulars, whilst believed to be accurate are set out as a general outline only for guidance and do not constitute any part of an offer or contract. Intending purchasers should not rely on them as statements of representation of fact, but must satisfy themselves by inspection or otherwise as to their accuracy. No person in this firm's employment has the authority to make or give any representation or warranty in respect of the property.



Eastlands Mews Bronte Close , Rugby CV21 3PW

**ONE OF TWO PLOTS REMAINING... ** EASTLANDS MEWS IS A NEW DEVELOPMENT OF NINE TOWNHOUSES AND SIX APARTMENTS LOCATED IN RUGBY...

ALLOCATED PARKING... **HELP TO BUY AVAILABLE - PLEASE ASK FOR FURTHER DETAILS** ... BE QUICK TO RESERVE YOUR PLOT.

Eastlands Mews was formerly known as Eastland's School and retains all of its original features externally, whilst the internal space has been transformed to create modern open plan living in a range of townhouses and apartments. These homes are perfect for commuters thanks to the easy access to Rugby, Northampton, Leamington Spa and Leicester. The homes have been designed with modern day living in mind, with naturally bright rooms and open spaces throughout.

Enjoy being a short walk away from Rugby town centre, have easy access to excellent transport links, everyday amenities and a superb choice of schools, including the famous Rugby school, right on your

£205,000

CONTACT INFORMATION

24a Warwick Row, Coventry CV1 1EY

02477 170170

info@matthewjames.uk.com

www.matthewjames.uk.com

Facebook

Twitter

Eastlands Mews Bronte Close

, Rugby CV21 3PW



- TWO DOUBLE BEDROOMS
- TOWNHOUSE
- ALLOCATED PARKING
- **TWO REMAINING**
- OPEN PLAN LIVING
- AVAILABLE NOW
- SHORT WALK TO RUGBY TOWN CENTRE
- HELP TO BUY AVAILABLE
- GREAT LOCATION
- PRIVATE REAR GARDEN



Kitchen Living Space

Bathroom

Bedroom One

Bedroom Two

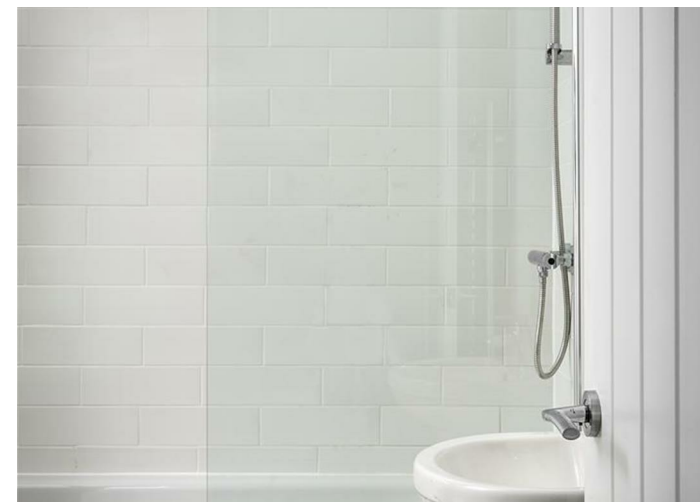
Flooring

Lighting & Electrics

Central Heating

Exterior

Build Warranty



Directions

